

# Assessment of three minimally invasive continuous cardiac output measurement methods in critically ill patients and a review of the literature

Pieter-Jan Palmers<sup>1</sup>, Wesley Vidts<sup>1</sup>, Koen Ameloot<sup>1</sup>, Colin Cordemans<sup>1</sup>, Niels Van Regenmortel<sup>1</sup>,  
 Inneke De Laet<sup>1</sup>, Karen Schoonheydt<sup>1</sup>, Hilde Dits<sup>1</sup>, Volker Eichhorn<sup>2</sup>,  
 Daniel Reuter<sup>2</sup>, Manu LNG Malbrain<sup>1</sup>

<sup>1</sup>*Department of Intensive Care, Ziekenhuis Netwerk Antwerpen, ZNA Stuivenberg, Antwerp, Belgium*

<sup>2</sup>*Department of Anaesthesiology, Centre of Anaesthesiology and Intensive Care Medicine, Hamburg-Eppendorf University Hospital, Hamburg, Germany*

## Abstract

**Background.** In this study we compared the accuracy of three continuous cardiac output (CCO) measurement methods, with intermittent transcardiopulmonary thermodilution (TPTD-CO) as the gold standard. The three studied CCO measurement methods were: uncalibrated peripheral pulse contour measurement (FCCO), calibrated central pulse contour measurement (PCCO), and CCO obtained by indirect Fick principle (NCCO).

**Methods.** We performed an observational study in 23 critically ill patients. Statistical analysis was done using Pearson's correlation and Bland-Altman analysis. A review of the relevant medical literature was performed.

**Results.** Only PCCO showed good correlation ( $R = 0.9$ ) and agreement with a bias of  $0.0 \pm 0.8 \text{ L min}^{-1}$  and percentage error of 24.5% when compared to TPTD-CO. In patients with normal systemic vascular resistance index ( $\text{SVRI} > 1,700 \text{ dyne sec cm}^{-5} \text{ m}^{-2}$ ), NCCO ( $R = 0.8$  and bias  $0.4 \pm 1.3 \text{ L min}^{-1}$ ) and FCCO ( $R = 0.8$  and bias  $0.1 \pm 1 \text{ L min}^{-1}$ ) also produced reliable results.

**Conclusion.** These results indicate that in our patient population, CCO can be most reliably monitored by calibrated central pulse contour measurements. All other methods appeared less accurate, especially in situations of low SVRI.

**Key words:** haemodynamic monitoring, cardiac output, pulse contour, thermodilution

Anestezjologia Intensywna Terapia 2012, tom XLIV, nr 4, 213–224

Every day, important decisions regarding the management of critically ill patients are guided by cardiac output (CO) measurements obtained by different techniques. Since the 1970s, the gold standard for CO measurement in the clinical setting has been the pulmonary artery catheter (PAC). More recently, transcardiopulmonary thermodilution cardiac output (TPTD-CO) measurement has been extensively validated as a less invasive alternative to PAC monitoring [1, 2, 3, 4]. However, both PAC and TPTD-CO have the significant disadvantage of being non-continuous, and are also somewhat labour-intensive and complex. In recent years, new and easier to use methods have been developed, providing continuous CO measurements with or without calibration.

The aim of this observational study was to compare the accuracy of three of these CCO-monitoring devices (Vigileo-FCCO, PiCCO-PCCO and NICO-NCCO) to the gold standard (TPTD-CO) in critically ill patients on high doses of vasopressors and inotropics. The basic characteristics of the three tested techniques and the gold standard technique are summarised in Table 1.

## METHODS

The study was conducted in accordance with the Intensive Care Unit (ICU) protocol, the Declaration of Helsinki, and applicable regulatory requirements as approved by the institutional review board and the local institutional ethics

**Table 1.** Characteristics of the CCO devices

Method	Device	Calibration	Input	Method	Validation
FCCO	FloTrac/Vigileo Edwards Lifesciences, Software version 1.03 and 1.04 Irvine, CA, USA	No	Radial arterial line	Pulse contour analysis	Reasonable results after version 1.07
NCCO	NICO Philips Respironics, Murrysville, PA, USA	No	Capnograph, pulse oxymeter	Indirect Fick principle [8]	Few validation studies [9]
PCCO and TPTD-CO	PiCCO Pulsion Medical Systems, Munich, Germany	Yes, by TPTD-CO	Femoral arterial line	Pulse contour analysis	Extensively validated [1–4]

CO — cardiac output; FCCO — FloTrac continuous cardiac output; NCCO — NICO continuous cardiac output; PCCO — PiCCO continuous cardiac output; TPTD-CO — transcardiopulmonary thermodilution cardiac output

committee (approval number 3789, 11 May 2011). In view of the nature of the study being purely observational and not demanding any deviation from standard clinical ICU care, informed consent from the patient or next of kin was not deemed essential. We merely retrospectively analysed the existing situation and did nothing to influence events. Only treating ICU physicians accessed the medical records. All data was pseudonymised before analysis.

The files of all patients treated in the intensive care units of the Ziekenhuis Netwerk Antwerpen (ZNA) campus Stuivenberg, between February 2004 and December 2006, were examined. During this period, mechanically ventilated patients were monitored with NCCO, while in patients who remained haemodynamically unstable in spite of fluid resuscitation, monitoring was frequently escalated to TPTD-CO. In addition, some of our referred patients were being monitored with FCCO on admission. This implies that some of our patients had multiple CO-monitoring devices installed simultaneously.

For inclusion in this data analysis, patients had to fulfill the following criteria:

1. mechanical ventilation,
2. FCCO or NCCO already in place,
3. persistent haemodynamic instability, after initial fluid resuscitation with clinical need to escalate to TPTD-CO monitoring with PCCO.

Data collection from the files of included patients was carried out as follows: first, we collected TPTD-CO measurements from the analogue patient files and/or TPTD-CO monitor digital data files. Second, three values from the CCO-device that was installed alongside the TPTD-CO monitor were obtained from the analogue patient files and/or CCO monitor digital data files. These three values were obtained during the five minutes before each TPTD-CO measurement. When more than three CCO values were found within this time window, those closest to the moment of TPTD-CO measurement were selected. Subsequently, the average of each trio of CCO measurements was taken to form a paired measurement with their corresponding TPTD-CO measurement. These paired measurements were then used

to perform Bland and Altman analysis and to calculate Pearson correlation coefficients.

Statistical analysis was done using SPSS software version 13 (SPSS Inc., Chicago, IL, USA). We performed Bland and Altman analysis as previously described [5] and computed Pearson correlation coefficients [6] to analyse the agreement between different methods of CO measurement. Two methods are considered equal and may be used interchangeably if  $R^2$  ( $R$  — Pearson's correlation coefficient) is  $> 0.6$ , if the differences within bias  $\pm 1.96$  SD (limits of agreement, LA) are not clinically important, if the precision of the new technique is comparable to the reference technique, and if the percentage error is less than 30%. Because different numbers of repeated measurements were performed in the patients, the appropriate analyses of co-variance were performed as suggested by Bland and Altman to look for intra- and inter-subject variability. We also performed subanalysis according to systemic vascular resistance index (SVRI). A low SVRI was defined as less than or equal to  $1,700 \text{ dyne sec cm}^{-5} \text{ m}^{-2}$ .

## RESULTS

Overall, 23 patients could be included. The patient demographics and haemodynamics at inclusion are listed in Tables 2 and 3. Patients were severely ill with a mean APACHE II and SAPS II score of  $20.8 \pm 7.5$  and  $52.4 \pm 14.6$  respectively. The largest group of patients were admitted to the ICU for sepsis ( $n = 11$ ).

In total, 450 TPTD-CO measurements with 450 corresponding triple CCO data sets could be extracted from the patients' files: 210 paired PCCO/TPTD-CO, 125 paired FCCO/TPTD-CO, and 115 paired NCCO/TPTD-CO measurements. Mean TPTD-CO recorded during the study period was  $6.9 \pm 1.8 \text{ L min}^{-1}$ .

### CCO VS. TPTD-CO IN THE GLOBAL STUDY POPULATION

The Pearson correlation coefficient comparing TPTD-CO to various CCO techniques was best for PCCO ( $R = 0.9$ ), followed by NCCO ( $R = 0.6$ ) and then FCCO ( $R = 0.4$ ). Bland and Altman analysis comparing TPTD-CO to CCO revealed

**Table 2.** Patient demographics on admission

Patients (n)	23
Measurements (n)	450
n/patient	19.5
Age (years)	63.7 ± 14.6
BMI (kg m <sup>-2</sup> )	27 ± 4.2
ICU stay (days)	20.8 ± 16.3
ICU mortality (%)	5 (21.7%)
Gender (M/F)	13/10
SAPS II score	52.4 ± 14.6
APACHE II score	20.8 ± 7.5
SOFA score	7.8 ± 3.9
Acute kidney injury	1
Abdominal sepsis	4
Respiratory sepsis	7
Polytrauma — neurotrauma	4
Intracerebral bleeding	2
Post CPR	2
Gastro-intestinal bleeding	1
Cardiogenic shock	2

BMI — body mass index; ICU — intensive care unit; M/F — male/female; SOFA — sequential organ failure assessment; CPR — cardiopulmonary resuscitation; other abbreviations see Table 1

**Table 3.** Patient haemodynamics at inclusion

Parameter	Mean ± SD
HR (bpm)	82.2 ± 20
MAP (mm Hg)	83.8 ± 17.9
GEF (%)	26.9 ± 6.7
SVV (%)	10.4 ± 5.4
PPV (%)	9.7 ± 5.9
CVP (mm Hg)	10.1 ± 3
GEDVI (mL m <sup>-2</sup> )	662 ± 109
EVLWI (mL kg <sup>-1</sup> )	8.3 ± 3
SVRI (dyne sec cm <sup>-5</sup> m <sup>-2</sup> )	1,818 ± 922
TPTD-CO (L min <sup>-1</sup> )	6.9 ± 1.8
PCCO (L min <sup>-1</sup> )	6.9 ± 2.1
FCCO (L min <sup>-1</sup> )	5.9 ± 1.5
NCCO (L min <sup>-1</sup> )	6 ± 2
Noradrenaline (µg kg <sup>-1</sup> min <sup>-1</sup> )	0.5 ± 0.2
Dobutamine (µg kg <sup>-1</sup> min <sup>-1</sup> )	12.5 ± 4.5

HR — heart rate; MAP — mean arterial pressure; GEF — global ejection fraction; SVV — stroke volume variation; PPV — pulse pressure variation; CVP — central venous pressure; GEDVI — global end-diastolic volume index; EVLWI — extravascular lung water index; SVRI — systemic vascular resistance index; other abbreviations see Table 1, 2

**Table 4.** Pearson correlation and Bland and Altman analysis for the different comparisons

Correlation	n	mean CO (L min <sup>-1</sup> )	range	R	COVA (%)	P-value	Bias (L min <sup>-1</sup> )	Precision (L min <sup>-1</sup> )	LLA (L min <sup>-1</sup> )	ULA (L min <sup>-1</sup> )	%error (%)
TPTD-CO vs. PCCO	210	6.9 ± 1.9	1.9–12.7	0.9	27.6	< 0.0001	0.0	0.8	-1.7	1.7	24.5
TPTD-CO vs. FCCO	125	6.3 ± 1.3	3.1–10.5	0.4	20.2	< 0.0001	0.9	1.6	-2.4	4.2	52.0
TPTD-CO vs. NCCO	115	6.7 ± 1.6	3.8–11.0	0.6	24.6	< 0.0001	1.3	1.7	-2.1	4.7	50.8
PCCO vs. FCCO	125	6.3 ± 1.4	3.5–10.3	0.4	28.8	< 0.0001	0.9	1.8	-2.8	4.5	57.6
PCCO vs. NCCO	115	6.7 ± 1.8	3.6–11.3	0.6	26.7	< 0.0001	1.5	2.0	-2.5	5.5	59.0
FCCO vs. NCCO	57	5.9 ± 2.0	1.5–10.4	0.7	33.3	< 0.0001	0.2	1.9	-3.6	4.0	64.2

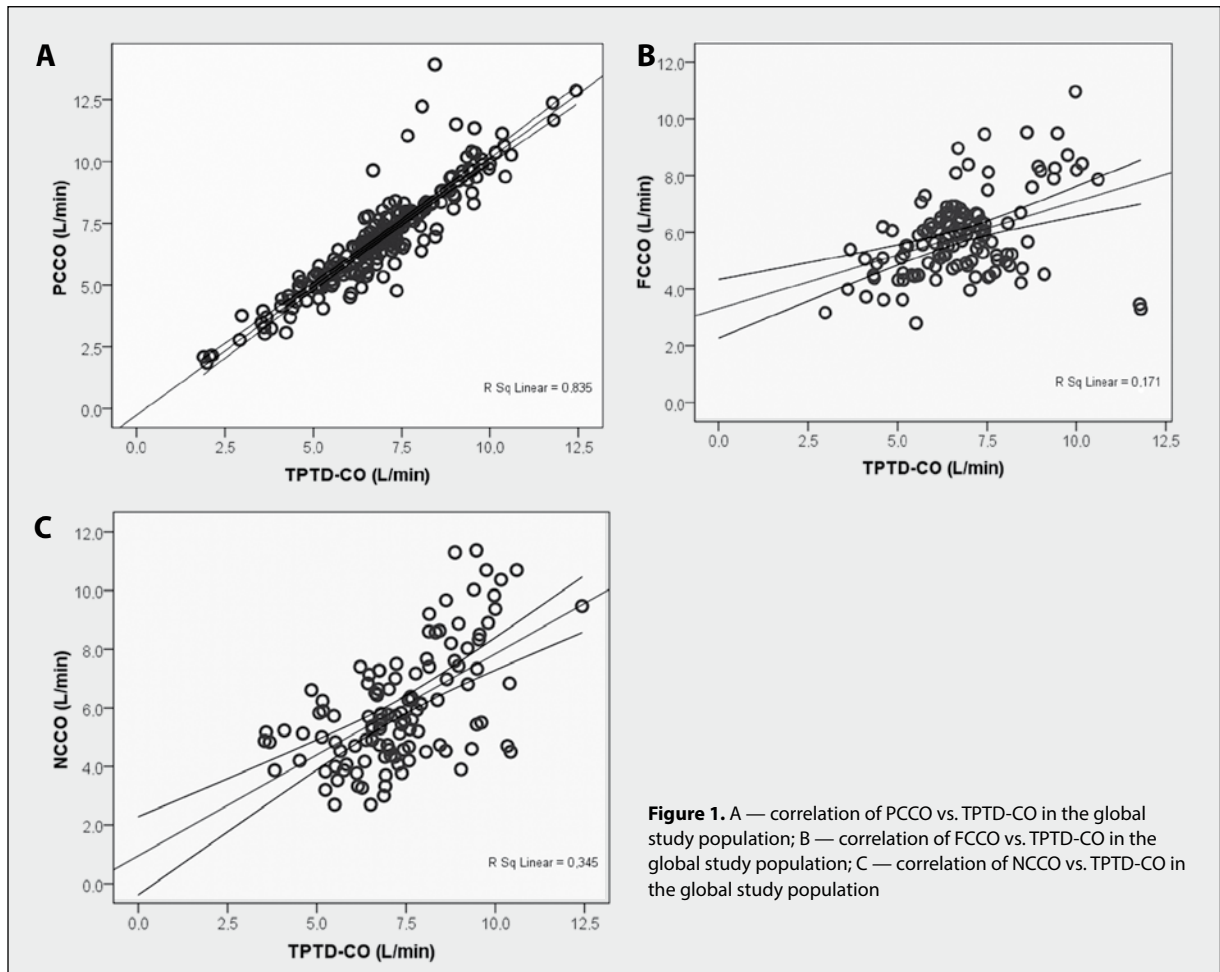
COVA — coefficient of variance, defined as SD divided by mean CO; LA — limits of agreements, defined as 2 x precision; LLA — lower limits of agreement, defined as bias minus LA; % error — percentage error, defined as LA divided by mean CO; R — Pearson correlation coefficient; ULA — upper limits of agreement, defined as bias plus LA; other abbreviations see Table 1, 2, 3

a mean bias ± 1.96 SD (LA) of 0.0 ± 1.6 L min<sup>-1</sup> (PCCO), vs. 0.9 ± 3.2 L min<sup>-1</sup> (FCCO) and 1.3 ± 3.4 L min<sup>-1</sup> (NCCO). This is summarised in Table 4. Figure 1 (panels A to C) shows the correlation of CCO vs. TPTD-CO in the global study population for the different techniques, while the Bland and Altman plots are shown in Figure 2 (panels A to C). We found no difference with regard to the FCCO software version 1.03 compared to 1.04.

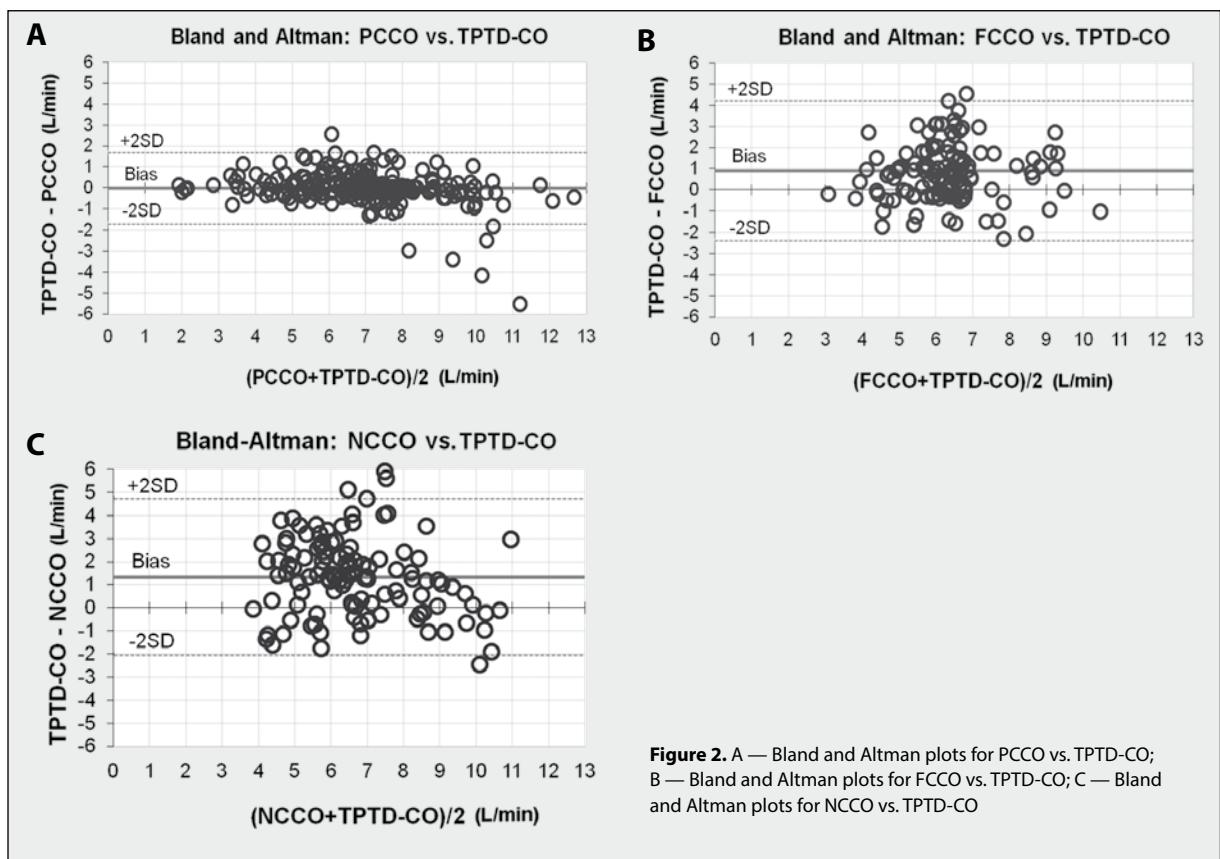
#### CCO VS. TPTD-CO ACCORDING TO SVRI

Subgroup analysis was performed comparing patients with low SVRI (defined as SVRI ≤ 1,700 dyne sec cm<sup>-5</sup> m<sup>-2</sup>)

to those with normal SVRI (> 1,700 dyne sec cm<sup>-5</sup> m<sup>-2</sup>). Table 5 lists the haemodynamic parameters in both groups. Pearson correlation coefficients and Bland and Altman analysis comparing TPTD-CO with PCCO, FCCO and NCCO stratified to patients with low or normal SVRI are given in Table 6. In patients with a low SVRI, only PCCO showed a good correlation with TPTD-CO (R = 0.9) with a mean bias ± LA of 0 ± 2 L min<sup>-1</sup> while there was no good TPTD-CO/FCCO or TPTD-CO/NCCO correlation. In patients with a normal SVRI, PCCO remains the most reliable monitoring device (R = 0.9, bias ± LA of -0.1 ± 1.4 L min<sup>-1</sup>) although both FCCO (R = 0.8, bias ± LA of 0.1 ± 2.0 L min<sup>-1</sup>) and NCCO (R = 0.8, bias ± LA of



**Figure 1.** A — correlation of PCCO vs. TPTD-CO in the global study population; B — correlation of FCCO vs. TPTD-CO in the global study population; C — correlation of NCCO vs. TPTD-CO in the global study population



**Figure 2.** A — Bland and Altman plots for PCCO vs. TPTD-CO; B — Bland and Altman plots for FCCO vs. TPTD-CO; C — Bland and Altman plots for NCCO vs. TPTD-CO

**Table 5.** Subgroup analysis according to systemic vascular resistance (SVRI)

	Low SVRI	Normal SVRI	P-value
Patients (n)	10	13	
Measurements (n)	112	98	
HR (bpm)	86 ± 17.6	77.8 ± 21.6	0.003
MAP (mm Hg)	74.4 ± 13.4	94.5 ± 16.4	< 0.0001
GEF (%)	27.4 ± 4.9	26.4 ± 8.3	NS
SVV (%)	10.6 ± 4.7	10.3 ± 6.1	NS
PPV (%)	9.7 ± 5	9.7 ± 6.8	NS
CVP (mm Hg)	10.4 ± 3.1	9.8 ± 3	NS
GEDVI (mL m <sup>-2</sup> )	678 ± 104	645 ± 113	0.04
EVLWI (mL kg <sup>-1</sup> )	8.5 ± 3.2	8.1 ± 2.8	NS
SVRI (dyne sec cm <sup>-5</sup> m <sup>-2</sup> )	1,330 ± 208	2,375 ± 1,092	< 0.0001
TPTD-CO (L min <sup>-1</sup> )	7.6 ± 1.5	6.1 ± 1.9	< 0.0001
PCCO (L min <sup>-1</sup> )	7.6 ± 1.9	6.2 ± 2	< 0.0002
FCCO (L min <sup>-1</sup> )	5.9 ± 1.4	5.9 ± 1.5	NS
NCCO (L min <sup>-1</sup> )	5.9 ± 2.2	6.2 ± 1.8	NS

Abbreviations see Table 1, 2, 3, 4

**Table 6.** Regression and Bland and Altman analysis according to low versus normal systemic vascular resistance (SVRI)

TPTD-CO vs.	PCCO		FCCO		NCCO	
	Low	Normal	Low	Normal	Low	Normal
SVRI						
Data points (n)	112	98	66	59	59	56
R	0.9	0.9	0.2	0.8	0.6	0.8
P-value	< 0.0001	< 0.0001	NS	< 0.0001	< 0.0001	< 0.0001
Mean CO (L min <sup>-1</sup> )	7.6 ± 1.6	6.1 ± 1.9	6.7 ± 1	5.9 ± 1.4	6.9 ± 1.6	6.4 ± 1.7
Range (L min <sup>-1</sup> )	3.3–12.7	1.9–10	4.9–9.5	3.1–10.5	4.1–11	2.5–9.9
Bias ± precision (L min <sup>-1</sup> )	0 ± 1	-0.1 ± 0.7	1.6 ± 1.8	0.1 ± 1	2.1 ± 1.7	0.4 ± 1.4
LLA (L min <sup>-1</sup> )	-1.9	-1.4	-1.9	-1.9	-1.3	-2.4
ULA (L min <sup>-1</sup> )	2.0	1.3	5.2	2.1	5.6	3.1
% error (%)	25.8	21.8	52.4	34.4	49.4	43.4

Abbreviations see Table 1, 2, 3, 4, 5

0.4 ± 2.8 L min<sup>-1</sup>) also showed to be reliable in this specific patient group.

## DISCUSSION

This study was designed to compare the accuracy of different CCO measurement methods (FCCO, NCCO and PCCO) to the gold standard TPTD-CO in critically ill patients.

We found that PCCO could reliably monitor CCO. Only the PCCO method showed good agreement with TPTD-CO independent of SVRI, although the PCCO measurements appeared to be slightly more accurate in patients with normal SVRI, it needs to be emphasised that CCO measurements were taken prior to recalibration. These findings are in line with current literature. Performing an extensive literature search on validation studies comparing PCCO to TPTD-CO or other gold standard CO measurements, we found an aver-

age bias ± LA of 0.0 ± 1.7 L min<sup>-1</sup> with a percentage error of 28.6 ± 7% (3,992 paired measurements in 587 patients) and a Pearson R<sup>2</sup> of 0.74 ± 0.2 (range 0.16 to 0.91). Table 7 lists some of the most important validation studies for PCCO. Indeed, PCCO is the most invasive of all the CCO monitoring systems tested. However, the fact that the PCCO method uses calibration through intermittent TPTD-CO to adjust for the unique mechanical properties of each patient's arterial tree appears to be the feature that enables this method to accurately monitor CO in unstable haemodynamic conditions with changing preload, afterload or contractility.

FCCO did not show a good correlation with TPTD-CO in the overall study population nor in the subgroup of patients with low SVRI. A fair to good CO correlation was found in the subgroup with normal SVRI. The unacceptably high LA can partially be explained by the software version of

**Table 7.** Summaries of findings on validation studies for PCCO

Authors	Year	Study population	Gold standard	Patients (n)	Data points (n)	Mean CO (L/min)	Bias (L/min)	Precision (L/min)	LA (L/min)	LLA (L/min)	ULA (L/min)	%Error° (%)	R <sup>2</sup>
Haller et al. [10]	1995	Mixed ICU	PAC	14	168	NA	-0.4	0.5	1.0	-1.4	0.7	NA	0.91
Goedje et al. [11]	1998	Cardiac surgery	PAC	30	270	NA	0.1	0.6	1.2	-1.1	1.3	NA	0.91
Goedje et al. [12]	1999	OPCABG	PAC	20	NA	NA	-0.1	0.5	1.0	-1.1	0.9	NA	0.82
Goedje et al. [13]	1999	SICU	PAC	24	216	NA	0.1	0.7	1.4	-1.3	1.5	NA	0.85
Buhrs et al. [14]	1999	CABG	PAC	12	36	4.7	0.0	0.6	1.3	-1.3	1.3	26.8	0.90
Zöllner et al. [15]	2000	Cardiac ICU	PAC	19	NA	NA	-0.3	1.3	2.5	-2.8	2.2	NA	0.77
Goedje et al. [16]	2001	Cardiac surgery	PAC	24	517	NA	-0.2	1.2	2.4	-2.6	2.2	NA	0.77
Kuntscher et al. [17]	2002	Burns	PAC	14	113	NA	-0.2	0.7	1.5	-1.7	1.3	NA	0.81
Della Rocca et al. [18]	2002	Liver transplant	PAC	62	186	7.6	0.0	0.9	1.7	-1.7	1.7	22.2	0.88
Della Rocca et al. [19]	2003	Lung transplant	PAC	58	NA	NA	0.1	0.7	1.4	-1.4	1.5	NA	NA
Mielck et al. [20]	2003	CABG	PAC	22	96	6.6	0.4	1.3	2.6	-2.2	3.0	35.0	NA
López-Herce et al. [21]	2006	Pigs	TPTD CO	51	209	1.7	0.0	0.3	0.6	-0.6	0.5	31.8	0.40
Halvorsen et al. [22]*	2006	OPCABG	PAC	30	107	5.0	-0.1	0.9	1.8	-1.9	1.6	33.5	NA
Bajorat et al. [23]	2006	Pigs	AFP	9	366	4.5	-1.2	0.7	1.4	-2.6	0.2	31.1	0.90
Fakler et al. [24]	2007	Cardiac surgery	TPTD CO	24	168	NA	0.1	0.8	1.5	-1.4	1.6	NA	0.86
Spöhr et al. [25]	2007	SICU	PAC CCO	14	182	8.8	0.1	1.4	2.7	-2.6	2.8	30.7	0.71
De Wilde et al. [26]	2007	Cardiac surgery	PAC	24	199	4.8	0.1	0.9	1.7	-1.6	1.9	36.2	NA
Chakravarthy et al. [27]	2007	OPCABG	PAC	15	438	NA	0.1	1.1	2.2	-2.1	2.4	20.0	0.16
Breukers et al. [28]	2009	Cardiac surgery (valvular)	PAC CCO	8	48	5.8	0.9	0.7	1.5	-0.5	2.4	25.5	0.64
Breukers et al. [28]	2009	CABG	PAC CCO	8	48	6.9	1.0	0.9	1.9	-0.9	2.9	27.2	0.81
Mutoh et al. [29]	2009	SAH	PAC	16	179	6.8	0.2	0.6	1.3	-1.1	1.5	18.3	0.64
Hofer et al. [30]	2010	Cardiac (OR/ICU)	PAC	26	156	5.0	-0.3	1.1	2.2	-2.5	1.9	44.0	NA
Monnet et al. [31]*	2010	Sepsis (ICU)	TPTD CO	40	80	6.3	0.1	0.7	1.4	-1.2	1.5	21.6	0.53
Present study	2012	Mixed ICU	TPTD CO	23	210	6.9	0.0	0.9	1.7	-1.7	1.7	24.5	0.81
Total				587	3,992								
Mean				24.5 ± 14.8	190.1 ± 124	5.8 ± 1.7	0 ± 0.4	0.8 ± 0.3	1.7 ± 0.5	-1.6 ± 0.7	1.7 ± 0.7	28.6 ± 7	0.74 ± 0.2
Range				8 to 62	36 to 517	1.7 to 8.8	-1.2 to 1	0.3 to 1.4	0.6 to 2.7	-2.8 to -0.5	0.2 to 3	18.3 to 44	0.16 to 0.91

\*values were given for CI; to obtain CO, CI was multiplied by 1.9 (= average BSA for 175 cm and 75 kg adult); %error was only given for Mielck, Halvorsen, Monnet and present study; it was retrospectively calculated in other studies based on LA and mean CO data given (%error = 100\*LA/mean CO); AFP — aortic flow probe; CABG — coronary artery bypass graft; ICU — intensive care unit; NA — not available; OPCABG — off pump CABG; OR — operating room; PAC — pulmonary artery catheter; other abbreviations see Table 1, 2, 3, 4, 5, 6

**Table 8.** Summaries of findings on validation studies for FCCO

Author	Year	Study population	Reference method	Version	Patients (n)	Data points (n)	mean CO (L/min)	CI*/CO	Bias (L/min)	Precision (L/min)	LA (L/min)	LLA (L/min)	ULA (L/min)	%Error ° (%)	R <sup>2</sup>
<i>Opdam et al. [32]</i>	2007	Cardiac (ICU)	PAC	1.03	6	218	NA	CI*	0.02	1.14	2.28	-2.26	2.3	NA	0.27
<i>Opdam et al. [32]</i>	2007	Cardiac (ICU)	PAC (cont)	1.03		218	NA	CI*	0.46	0.93	1.86	-1.41	2.32	NA	0.06
<i>Sander et al. [33]</i>	2006	Cardiac (OR/ICU)	PAC	1.03	30	108	4.8	CO	-0.2	1.4	2.8	-3	2.6	54	0.05
<i>Breukers et al. [34]</i>	2006	Cardiac (ICU)	PAC		20	56	5.5	CO	-0.14	1	2	-2.14	1.86	31	0.55
<i>De Waal et al. [35]**</i>	2007	Cardiac (OR/ICU)	PAC		22	185	5.3	CO	0	0.87	1.74	-1.74	1.74	33	0.56
<i>De Waal et al. [35]**</i>	2007	Cardiac (OR/ICU)	TPTD			140	5.4	CO	-0.01	1.09	2.17	-2.18	2.16	40	0.36
<i>McGee et al. [36]</i>	2007	Mixed (ICU)	PAC		84	561	6.2	CO	-0.2	1.28	2.55	-2.75	2.35	43	NA
<i>Manecke et al. [37]</i>	2007	Cardiac (ICU)	PAC		50	295	NA	CO	-0.55	0.98	1.96	-2.51	1.41	NA	NA
<i>Manecke et al. [37]</i>	2007	Cardiac (ICU)	PAC (cont)			295	NA	CO	-0.6	1.05	2.1	-2.7	1.5	NA	NA
<i>Mayer et al. [38]**</i>	2007	Cardiac (OR/ICU)	PAC	1.03	40	244	4.8	CI*	-0.87	1.09	2.19	-3.06	1.31	46	0.28
<i>Button et al. [39]</i>	2007	Cardiac (OR/ICU)	PAC	1.07	31	150	5.2	CO	-0.25	1.14	2.27	-2.52	2.02	54	NA
<i>Cannesson et al. [40]**</i>	2007	Cardiac (OR/ICU)	PAC		11	166	4.6	CO	0	0.87	1.74	-1.74	1.74	38	0.43
<i>Sakka et al. [41]</i>	2007	Sepsis (ICU)	TPTD		24	72	6.7	CO	0.5	2.3	4.6	-4.1	5.1	68.7	0.26
<i>Lorsonradee et al. [42]***</i>	2007	Cardiac (OR)	PAC (cont)		52	NA	4.9	CO	0	1.37	2.74	-2.74	2.74	56	0.03
<i>Lorsonradee et al. [42]***</i>	2007	Cardiac (OR)	PAC (cont)			NA	4.9	CO	0	1.23	2.45	-2.45	2.45	50	0.03
<i>Chakravarthy et al. [27]</i>	2007	Cardiac (OR)	PAC		15	438	NA	CO	0.15	0.33	0.66	-0.51	0.81	NA	0.24
<i>Prasser et al. [43]**</i>	2007	Cardiac (ICU)	PAC		20	158	6.1	CO	0.01	0.82	1.63	-1.62	1.64	26.9	NA
<i>Zimmermann et al. [44]</i>	2008	Cardiac (OR/ICU)	PAC		30	192	NA	CO	-0.1	1.45	2.9	-3	2.8	NA	0.31
<i>Biais et al. [45]</i>	2008	LTX	PAC		20	400	NA	CO	0.8	1.33	2.65	-1.8	3.5	43	0.55
<i>Mehta et al. [46]**</i>	2008	Cardiac (OR)	PAC		12	96	4.3	CO	0.26	0.63	1.25	-0.99	1.51	29	NA
<i>Staier et al. [47]</i>	2008	Cardiac (OR)	PAC		30	120	4.6	CO	-0.02	0.52	1.03	-1.05	1.01	44	NA
<i>Compton et al. [48]**</i>	2008	Medical ICU	TPTD	1.1	25	324	5.3	CI*	1.29	1.57	3.13	-1.84	4.42	58.8	NA
<i>Mayer et al. [49]</i>	2008	Cardiac (OR/ICU)	PAC		40	282	4.8	CI*	-0.36	0.57	1.14	-1.5	0.78	24.6	NA
<i>Senn et al. [50]**</i>	2009	Cardiac (ICU)	TPTD		50	200	5.5	CO	0.15	0.8	1.6	-1.45	1.75	29	NA
<i>Zimmermann et al. [51]**</i>	2009	Cardiac (ICU)	PAC	1.1	24	138	5	CO	-0.04	1.07	2.13	-2.17	2.09	43	0.32

**Table 8 (cont.).** Summaries of findings on validation studies for FCCO

Author	Year	Study population	Reference method	Version	Patients (n)	Data points (n)	mean CO (L/min)	CI*/CO	Bias (L/min)	Precision (L/min)	LA (L/min)	LLA (L/min)	ULA (L/min)	%Error° (%)	R <sup>2</sup>
Marque et al. [52]***	2009	Cardiac (OR)	PAC (cont)		29	12,099	4.9	CO	-0.01	0.81	1.62	-1.63	1.61	33.3	0.48
Mayer et al. [53]	2009	Cardiac (OR)	PAC		38	262	4.6	CI*	-0.36	0.63	1.25	-1.62	0.89	26.6	0.61
Biancofiore et al. [54]	2009	LTX	PAC	1.1	29	290	5.2	CO	-1.3	1.43	2.85	-1.5	4.1	45	NA
Ostergaard et al. [55]	2009	Cardiac (OR/ICU)	PAC	1.0	25	50	4.2	CO	-0.51	0.94	1.87	-2.38	1.36	48	NA
Chakravarthy et al. [56]***	2009	Cardiac (ICU)	PAC (cont)		20	140	4.9	CI*	0.04	0.87	1.75	-1.71	1.79	35.4	NA
Concha et al. [57]	2009	Colon surgery	TEE		10	88	4.8	CO	1.17	1.01	2.02	-0.85	3.19	40	NA
De Wilde et al. [58]	2009	Cardiac (ICU)	PAC		13	104	5.3	CO	-0.33	1.23	2.46	-2.79	2.13	34	NA
Eleftheriadis [59]***	2009	Cardiac (OR)	PAC		16	112	5	CO	-0.4	0.85	1.7	-2.1	1.3	34	0.4
Murtoh et al. [29]	2009	SAH	TPTD	1.14	16	179	6.8	CO	-0.57	0.44	0.88	-1.45	0.31	24.8	0.67
Hofer et al. [30]***	2010	Cardiac (OR)	PAC		26	156	5	CO	-0.2	1.05	2.1	-2.3	1.9	42	NA
Schramm et al. [60]**	2010	Cardiac (OR)	PAC		20	78	4.9	CO	0.35	1.88	3.76	-3.41	4.11	76	NA
Slagt et al. [61]**	2010	Sepsis (ICU)	PAC	1.07	4	86	6.7	CO	-1.6	1.6	3.2	-4.8	1.6	48	0.1
Slagt et al. [61]**	2010	Sepsis (ICU)	PAC	1.1	5	73	6.9	CO	-1.2	1.1	2.2	-3.4	1	32	0.81
Böttger et al. [62]	2010	Sepsis (ICU)	TPTD		19	55	6.4	CO	0.72	1.45	2.89	-2.17	3.61	49.1	NA
Jeong et al. [63]	2010	OPCABG	PAC (cont)		28	234	4	CO	0.23	1.13	2.27	-2.04	2.5	57	NA
Krejci et al. [64]**	2010	LTX	PAC		19	97	7.7	CI*	3.38	2.63	5.26	-1.88	8.65	68.5	0.2
Vetrugno et al. [65]**	2010	CABG	PAC		20	360	4.6	CO	-0.5	0.86	1.72	-2.22	1.22	37	0.49
Monnet et al. [31]**(*)	2010	Sepsis (ICU)	TPTD	1.1	40	80	5.9	CI*	-0.19	1.79	3.57	-3.76	3.38	61	0.03
Saraceni et al. [66]	2011	Mixed (ICU)	PAC	1.07–1.10	21	140	NA	CI*	-0.18	2.36	4.72	-4.9	4.54	NA	0.62
Biancofiore et al. [67]	2011	LTX	PAC	3.02	21	210	NA	CI*	0.4	NA	NA	NA	NA	52	0.67
Present study	2012	Mixed (ICU)	TPTD	1.03–1.04	12	125	6.3	CO	0.9	1.65	3.3	-2.4	4.2	52	0.17
Total					1,067	15,837									
Mean					25.4 ± 14.9	456.2 ± 1,799.5	5.4 ± 0.9		0 ± 0.8	1.2 ± 0.5	2.3 ± 1	-2.3 ± 0.9	2.4 ± 1.5	43.8 ± 12.8	0.35 ± 0.23
Range					4 to 84	50 to 12,099	4 to 7.7		-1.6 to 3.4	0.3 to 2.6	0.7 to 5.3	-4.9 to -0.5	0.3 to 8.7	24.6 to 76	0.03 to 0.81

\*values were given for CI; to obtain CO, CI was multiplied by 1.9 (= average BSA for 175 cm and 75 kg adult); \*\*mean CO was retrospectively calculated based on LA and %error data given (CO = 100 LA %error<sup>-1</sup>)  
 \*\*\*%error was retrospectively calculated in other studies based on LA and mean CO data given (%error = 100 LA meanCO<sup>-1</sup>); LTX — liver transplant; PAC — pulmonary artery catheter with intermittent thermodilution; PAC (cont) — pulmonary artery catheter with continuous CO; R<sup>2</sup> — square of Pearson regression coefficient; SAH — subarachnoid haemorrhage; TEE — transoesophageal echocardiography; TPTD — transcardiopulmonary thermodilution with PiCCO; other abbreviations see Table 1, 2, 3, 4, 5, 6, 7



**Table 9.** Summaries of findings on validation studies for NCCO

Author	Year	Study population	Reference method	Patients (n)	Data points (n)	mean CO (L/min)	Bias (L/min)	Precision (L/min)	LA (L/min)	LLA (L/min)	ULA (L/min)	% error (%)	R <sup>2</sup>
<i>de Abreu et al. [68]</i>	1997	ARDS sheep	PAC	20	NA	NA	1.69	0.95	1.9	-0.21	3.59	NA	0.54
<i>Kuck-K et al. [69]</i>	1998	Cardiac surgery	PAC	36	NA	NA	NA	NA	NA	NA	NA	NA	0.84
<i>Guzzi et al. [70]</i>	1998	CABG	PAC	27	NA	NA	-0.01	0.31	0.62	-0.63	0.61	NA	0.72
<i>Jopling MW [71]</i>	1998	Unknown	PAC	48	NA	NA	-1.75	1.14	2.28	-4.03	0.53	NA	NA
<i>Watt et al. [72]</i>	1998	Cardiac surgery	PAC	5	NA	NA	0.2	0.35	0.7	-0.5	0.9	NA	NA
<i>Loeb et al. [73]</i>	1999	Cardiac surgery	PAC	12	NA	NA	-1.19	0.58	1.16	-2.35	-0.03	NA	NA
<i>Kuck et al. [74]</i>	1999	CABG	PAC	134	NA	NA	0.69	0.47	0.94	-0.25	1.63	NA	0.6
<i>Hayashi et al. [75]</i>	2000	Dogs	PAC	6	246	5.1	0.07	0.7	1.4	-1.33	1.47	27.5	0.86
<i>Van Heerden et al. [76]</i>	2000	Post cardiac surgery	PAC	12	42	NA	NA	NA	NA	NA	NA	NA	0.69
<i>Jin et al. [77]<sup>o</sup></i>	2000	Pigs Haemorrhagic	PAC	16	NA	NA	-1.1	1.35	2.7	-3.8	1.6	NA	0.69
<i>Jin et al. [77]<sup>o</sup></i>	2001	Pigs Septic	AFP			2.5	1.3	1	2	-0.7	3.3	81.3	0.42
<i>Jin et al. [77]<sup>o</sup></i>	2002	Pigs cardiogenic	AFP			4.9	0.1	0.6	1.2	-1.1	1.3	24.3	0.67
<i>Maxwell et al. [78]**</i>	2001	Pigs trauma	PAC	11	129	3.4	0.01	0.35	0.69	-0.68	0.7	20.3	0.54
<i>Nilsson et al. [79]</i>	2001	Cardiac surgery	PAC	30		4.4	0.2	0.9	1.8	-1.6	2	NA	NA
<i>Odenstedt et al. [80]</i>	2002	ICU (n = 3) Surgery (n = 12)	PAC	15	125	NA	0.04	0.86	1.72	-1.68	1.76	NA	0.96
<i>Murias et al. [81]*</i>	2002	General ICU	PAC	22	79	6	-0.18	1.39	2.78	-2.96	2.6	46	0.71
<i>Kotake et al. [82]</i>	2003	Aortic reconstruction surgery	PAC	28	112	NA	0.58	0.9	1.8	-1.22	2.38	NA	0.64
<i>Mielck et al. [20]</i>	2003	CABG	PAC	22	33	6.7	0.17	1.45	2.9	-2.73	3.07	44	NA
<i>Gunkel et al. [83]<sup>o</sup></i>	2004	Dogs	LIDCO	6	47	3.6	0.22	0.84	1.68	-1.46	1.9	46.9	0.77
<i>Botero et al. [84]</i>	2004	CABG	AFP	68	NA	NA	0.04	1.07	2.14	-2.1	2.18	44.8	NA
<i>Rocco et al. [85]**</i>	2004	ICU non postoperative	PAC	12	36	7.3	1.2	0.75	1.5	-0.3	2.7	20.6	0.79
<i>Bajorat et al. [23]**</i>	2006	Pigs	AFP	9	366	3.3	-0.19	0.89	1.77	-1.96	1.58	54.5	0.59
<i>Gueret et al. [86]**</i>	2006	CABG	PAC	22	4,372	4.2	-0.1	1.15	2.3	-2.4	2.2	54.8	0.48
<i>Ng et al. [8]**</i>	2007	Thoracic surgery	PAC	12	76	4.7	0.29	0.78	1.56	-1.27	1.85	33.5	NA
<i>Kotake et al. [87]</i>	2009	Aortic reconstruction surgery	PAC	42	376	4.8	-0.18	0.81	1.62	-1.8	1.44	33.4	0.65
Present study	2012	Mixed ICU	TPTD	12	115	6.7	1.3	1.7	3.39	-2.09	4.69	50.8	0.34
Total				627	6,154								
Mean				26.1 ± 27.4	439.6 ± 1,137.5	4.8 ± 1.4	0.1 ± 0.8	0.9 ± 0.4	1.8 ± 0.7	-1.6 ± 1.1	1.9 ± 1.1	41.6 ± 16.6	0.66 ± 0.15
Range				5 to 134	33 to 4,372	2.5 to 7.3	-1.8 to 1.7	0.3 to 1.7	0.6 to 3.4	-4 to -0.2	0 to 4.7	20.3 to 81.3	0.34 to 0.96

<sup>o</sup>CO was calculated as 156 mL · kg<sup>-1</sup> · min<sup>-1</sup> based on an average weight of 23 kg, bias = 9.3 mL · kg<sup>-1</sup> · min<sup>-1</sup> and LA = 70.5; <sup>\*</sup>mean CO was retrospectively calculated based on LA and %error data given (CO = 100 LA) %error<sup>-1</sup> %error was retrospectively calculated based on LA and mean CO data given %error = 100 LA · meanCO<sup>-1</sup>; ARDS — acute respiratory distress syndrome; LIDCO — lithium dilution CO; other abbreviations see Table 1, 2, 3, 4, 5, 6, 7, 8

the device (version 1.03 and 1.04) we used. This is in line with the findings of other authors. Recently a review and meta-analysis published by Mayer et al. [7] also concluded that the FCCO method is unreliable using software versions earlier than 1.07. The results of the literature search on studies validating FCCO are listed in Table 8. On average, they show a bias  $\pm$  LA of  $0.0 \pm 2.3$  L  $\text{min}^{-1}$  with a percentage error of  $43.8 \pm 12.8\%$  (15,837 paired measurements in 1,067 patients) and a Pearson  $R^2$  of  $0.35 \pm 0.23$  (range 0.03 to 0.81). In patients with normal SVRI, our results demonstrate that even the older software we used produced acceptable results ( $R = 0.8$  and bias  $\pm$  LA =  $0.1 \pm 2$ ). So it seems that FCCO measurements are only unreliable in septic patients (with vasoplegia).

The NCCO method also produced unacceptably high limits of agreement with TPTD-CO in the general study population. As with FCCO, in the subgroup of patients with normal SVRI, NCCO produced more reliable results (bias  $\pm$  2SD =  $0.4 \pm 2.75$  L  $\text{min}^{-1}$ ,  $R = 0.8$ ). Other studies have shown better results for NICO in the past. Table 9 lists the most important validation studies for NCCO currently available. On average, they show a bias  $\pm$  LA of  $0.1 \pm 1.8$  L  $\text{min}^{-1}$  with a percentage error of  $41.6 \pm 16.6\%$  (6,154 paired measurements in 627 patients) and a Pearson  $R^2$  of  $0.66 \pm 0.15$  (range 0.34 to 0.96). We suspect the reason for the underperformance of NCCO in our study is related to the fact that it was performed in the ICU setting in unstable haemodynamic conditions, while most of the listed studies were performed in more stable post-surgical patients.

Subgroup analysis for SVRI showed, as expected, a lower mean arterial pressure and a higher heart rate in the low SVRI group. As we also expected, TPTD-CO was significantly higher in the low SVRI group, which consisted of hyperdynamic, septic patients. Further analysis showed a negative effect of low SVRI on the accuracy of FCCO and NCCO measurements. This is illustrated in Table 5 where only PCCO and TPTD-CO were able to detect the significantly higher CO in hyperdynamic, low SVRI states as seen in sepsis. In Table 6 one can appreciate that only PCCO has significant agreement with TPTD-CO in low SVRI states. This may be attributable to the fact that patients with low SVRI are generally more unstable and have a more rapidly changing haemodynamic situation. This reflects profound and dynamic changes in vascular resistance and compliance in these low SVRI patients, sometimes exacerbated by the use of vasopressive agents. Vascular resistance and compliance values are derived from standard demographic datasets in the uncalibrated CCO devices. Only PCCO is calibrated (by TPTD-CO), hence improving its accuracy in conditions of changing vascular compliance and resistance. This might be the reason why the performance of PCCO was not affected by SVRI.

## CONCLUSION

We conclude that CCO was most reliably monitored by PCCO, particularly in unstable patients with low SVRI, where reliable information about haemodynamics is most critical. In situations of normal SVRI, NCCO and FCCO also showed acceptable accuracy.

## References:

1. Felbinger TW, Reuter DA, Eltischig HK, et al.: Cardiac index measurements during rapid preload changes: a comparison of pulmonary artery thermodilution with arterial pulse contour analysis. *J Clin Anesth* 2005; 17: 241–248.
2. Bein B, Worthmann F, Tonner PH, et al.: Comparison of esophageal Doppler, pulse contour analysis, and real-time pulmonary artery thermodilution for the continuous measurement of cardiac output. *J Cardiothorac Vasc Anesth* 2004; 18: 185–189.
3. Malbrain ML, De Potter P, Deeren D: Cost-effectiveness of minimally invasive hemodynamic monitoring. In: Vincent J (ed.): *Yearbook of Intensive Care and Emergency Medicine*. Springer 2005: 603–618.
4. Marx G, Schuerholz T, Sümpelmann R, Simon T, Leuwer M: Comparison of cardiac output measurements by arterial trans-cardiopulmonary and pulmonary arterial thermodilution with direct Fick in septic shock. *Eur J Anaesthesiol* 2005; 22: 129–134.
5. Bland JM, Altman DG: Statistical methods for assessing agreement between two methods of clinical measurement. *Lancet* 1986; 1: 307–310.
6. Pearson K: Determination of the coefficient of correlation. *Science* 1909; 30: 23–25.
7. Mayer J, Boldt J, Poland R, Peterson A, Manecke GR Jr.: Continuous arterial pressure waveform-based cardiac output using the FloTrac/Vigileo: a review and meta-analysis. *J Cardiothorac Vasc Anesth* 2009; 23: 401–406.
8. Ng JM, Chow MY, Ip-Yam PC, Goh MH, Agasthian T: Evaluation of partial carbon dioxide rebreathing cardiac output measurement during thoracic surgery. *J Cardiothorac Vasc Anesth* 2007; 21: 655–658.
9. Young BP, Low LL: Noninvasive monitoring cardiac output using partial CO(2) rebreathing. *Crit Care Clin* 2010; 26: 383–392.
10. Haller M, Zöllner C, Briegel J, Forst H: Evaluation of a new continuous thermodilution cardiac output monitor in critically ill patients: a prospective criterion standard study. *Crit Care Med*. 1995; 23: 860–866.
11. Gödje O, Höke K, Lamm P, et al.: Continuous, less invasive, hemodynamic monitoring in intensive care after cardiac surgery. *Thorac Cardiovasc Surg* 1998; 46: 242–249.
12. Gödje O, Thiel C, Lamm P, et al.: Less invasive, continuous hemodynamic monitoring during minimally invasive coronary surgery. *Ann Thorac Surg* 1999; 68: 1532–1536.
13. Goedje O, Hoeke K, Lichtwarck-Aschoff M, Faltchauser A, Lamm P, Reichart B: Continuous cardiac output by femoral arterial thermodilution calibrated pulse contour analysis: comparison with pulmonary arterial thermodilution. *Crit Care Med*. 1999; 27: 2407–2412.
14. Buhre W, Weyland A, Kazmaier S, et al.: Comparison of cardiac output assessed by pulse-contour analysis and thermodilution in patients undergoing minimally invasive direct coronary artery bypass grafting. *J Cardiothorac Vasc Anesth* 1999; 13: 437–440.
15. Zöllner C, Haller M, Weis M, et al.: Beat-to-beat measurement of cardiac output by intravascular pulse contour analysis: a prospective criterion standard study in patients after cardiac surgery. *J Cardiothorac Vasc Anesth* 2000; 14: 125–129.
16. Gödje O, Friedl R, Hannekum A: Accuracy of beat-to-beat cardiac output monitoring by pulse contour analysis in hemodynamical unstable patients. *Med Sci Monit* 2001; 7: 1344–1350.
17. Küntscher MV, Blome-Eberwein S, Pelzer M, Erdmann D, Germann G: Transcardiopulmonary vs. pulmonary arterial thermodilution methods for hemodynamic monitoring of burned patients. *J Burn Care Rehabil* 2002; 23: 21–26.
18. Della Rocca G, Costa MG, Pompei L, Coccia C, Pietropaoli P: Continuous and intermittent cardiac output measurement: pulmonary artery catheter versus aortic transpulmonary technique. *Br J Anaesth* 2002; 88: 350–356.
19. Della Rocca G, Costa MG, Coccia C, G et al.: Cardiac output monitoring: aortic transpulmonary thermodilution and pulse contour analysis agree with standard thermodilution methods in patients undergoing lung transplantation. *Can J Anaesth* 2003; 50: 707–711.

20. Mielck F, Buhre W, Hanekop G, Tirilomis T, Hilgers R, Sonntag H: Comparison of continuous cardiac output measurements in patients after cardiac surgery. *J Cardiothorac Vasc Anesth* 2003; 17: 211–216.
21. López-Herce J, Rupérez M, Sánchez C, García C, García E: Correlation between cardiac output measured by the femoral arterial thermodilution technique pulmonary arterial and that measured by contour pulse analysis in a paediatric animal model. *J Clin Monit Comput* 2006; 20: 19–23.
22. Halvorsen PS, Espinoza A, Lundblad R, et al.: Agreement between Pcco pulse-contour analysis, pulmonary artery thermodilution and transthoracic thermodilution during off-pump coronary artery by-pass surgery. *Acta Anaesthesiol Scand* 2006; 50: 1050–1057.
23. Bajarat J, Hofmoeckel R, Vagts DA, et al.: Comparison of invasive and less-invasive techniques of cardiac output measurement under different haemodynamic conditions in a pig model. *Eur J Anaesthesiol* 2006; 23: 23–30.
24. Fakler U, Pauli Ch, Balling G, et al.: Cardiac index monitoring by pulse contour analysis and thermodilution after pediatric cardiac surgery. *J Thorac Cardiovasc Surg* 2007; 133: 224–228.
25. Spöhr F, Hettrich P, Bauer H, Haas U, Martin E, Böttiger BW: Comparison of two methods for enhanced continuous circulatory monitoring in patients with septic shock. *Intensive Care Med* 2007; 33: 1805–1810.
26. de Wilde RB, Schreuder JJ, van den Berg PC, Jansen JR: An evaluation of cardiac output by five arterial pulse contour techniques during cardiac surgery. *Anaesthesia* 2007; 62: 760–768.
27. Chakravarthy M, Patil TA, Jayaprakash K, Kalligudd P, Prabhakumar D, Jawali V: Comparison of simultaneous estimation of cardiac output by four techniques in patients undergoing off-pump coronary artery bypass surgery — a prospective observational study. *Ann Card Anaesth* 2007; 10: 121–126.
28. Breukers RM, Groeneveld AB, de Wilde RB, Jansen JR: Transpulmonary versus continuous thermodilution cardiac output after valvular and coronary artery surgery. *Interact Cardiovasc Thorac Surg* 2009; 9: 4–8.
29. Mutoh T, Ishikawa T, Nishino K, Yasui N: Evaluation of the FloTrac uncalibrated continuous cardiac output system for perioperative hemodynamic monitoring after subarachnoid hemorrhage. *J Neurosurg Anesthesiol* 2009; 21: 218–225.
30. Hofer CK, Button D, Weibel L, Genoni M, Zollinger A: Uncalibrated radial and femoral arterial pressure waveform analysis for continuous cardiac output measurement: an evaluation in cardiac surgery patients. *J Cardiothorac Vasc Anesth* 2010; 24: 257–264.
31. Monnet X, Anguel N, Naudin B, Jabot J, Richard C, Teboul JL: Arterial pressure-based cardiac output in septic patients: different accuracy of pulse contour and uncalibrated pressure waveform devices. *Crit Care* 2010; 14: R109.
32. Opdam HI, Wan L, Bellomo R: A pilot assessment of the FloTrac cardiac output monitoring system. *Intensive Care Med* 2007; 33: 344–349.
33. Sander M, Spies CD, Grubitzsch H, Foer A, Müller M, von Heymann C: Comparison of uncalibrated arterial waveform analysis in cardiac surgery patients with the thermodilution cardiac output measurements. *Crit Care* 2006; 10: R164.
34. Breukers RM, Sepehrkhoy S, Spiegelenberg SR, Groeneveld AB: Cardiac output measured by a new arterial pressure waveform analysis method without calibration compared with thermodilution after cardiac surgery. *J Cardiothorac Vasc Anesth* 2007; 21: 632–635.
35. de Waal EE, Kalkman CJ, Rex S, Buhre WF: Validation of a new arterial pulse contour-based cardiac output device. *Crit Care Med* 2007; 35: 1904–1099.
36. McGee WT, Horswell JL, Calderon J, et al.: Validation of a continuous, arterial pressure-based cardiac output measurement: a multicenter, prospective clinical trial. *Crit Care* 2007; 11: R105.
37. Manecke, GR Jr., Auger WR: Cardiac output determination from the arterial pressure wave: clinical testing of a novel algorithm that does not require calibration. *J Cardiothorac Vasc Anesth* 2007; 21: 3–7.
38. Mayer J, Boldt J, Schöllhorn T, Röhm KD, Mengistu AM, Suttner S: Semi-invasive monitoring of cardiac output by a new device using arterial pressure waveform analysis: a comparison with intermittent pulmonary artery thermodilution in patients undergoing cardiac surgery. *Br J Anaesth* 2007; 98: 176–182.
39. Button D, Weibel L, Reuthebuch O, Genoni M, Zollinger A, Hofer CK: Clinical evaluation of the FloTrac/Vigileo system and two established continuous cardiac output monitoring devices in patients undergoing cardiac surgery. *Br J Anaesth* 2007; 99: 329–336.
40. Cannesson M, Attof Y, Rosamel P, Joseph P, Bastien O, Lehot JJ: Comparison of FloTrac cardiac output monitoring system in patients undergoing coronary artery bypass grafting with pulmonary artery cardiac output measurements. *Eur J Anaesthesiol* 2007; 24: 832–839.
41. Sakka SG, Kozieras J, Thuemer O, van Hout N: Measurement of cardiac output: a comparison between transpulmonary thermodilution and uncalibrated pulse contour analysis. *Br J Anaesth* 2007; 99: 337–342.
42. Lorsomradee S, Lorsomradee S, Cromheecke S, De Hert SG: Uncalibrated arterial pulse contour analysis versus continuous thermodilution technique: effects of alterations in arterial waveform. *J Cardiothorac Vasc Anesth* 2007; 21: 636–643.
43. Prasser C, Trabold B, Schwab A, Keyl C, Ziegler S, Wiesenack C: Evaluation of an improved algorithm for arterial pressure-based cardiac output assessment without external calibration. *Intensive Care Med* 2007; 33: 2223–2225.
44. Zimmermann A, Kufner C, Hofbauer S, et al.: The accuracy of the Vigileo/FloTrac continuous cardiac output monitor. *J Cardiothorac Vasc Anesth* 2008; 22: 388–393.
45. Biasi M, Nouette-Gaulain K, Cottenceau V, et al.: Cardiac output measurement in patients undergoing liver transplantation: pulmonary artery catheter versus uncalibrated arterial pressure waveform analysis. *Anesth Analg* 2008; 106: 1480–1486.
46. Mehta Y, Chand RK, Sawhney R, Bhise M, Singh A, Trehan N: Cardiac output monitoring: comparison of a new arterial pressure waveform analysis to the bolus thermodilution technique in patients undergoing off-pump coronary artery bypass surgery. *J Cardiothorac Vasc Anesth* 2008; 22: 394–399.
47. Staier K, Wiesenack C, Günkel L, Keyl C: Cardiac output determination by thermodilution and arterial pulse waveform analysis in patients undergoing aortic valve replacement. *Can J Anaesth* 2008; 55: 22–28.
48. Compton FD, Zukunft B, Hoffmann C, Zidek W, Schaefer JH: Performance of a minimally invasive uncalibrated cardiac output monitoring system (FloTrac/Vigileo) in haemodynamically unstable patients. *Br J Anaesth* 2008; 100: 451–456.
49. Mayer J, Boldt J, Wolf MW, Lang J, Suttner S: Cardiac output derived from arterial pressure waveform analysis in patients undergoing cardiac surgery: validity of a second generation device. *Anesth Analg* 2008; 106: 867–872.
50. Senn A, Button D, Zollinger A, Hofer CK: Assessment of cardiac output changes using a modified FloTrac/Vigileo algorithm in cardiac surgery patients. *Crit Care* 2009; 13: R32.
51. Zimmermann A, Steinwendner J, Hofbauer S, et al.: The accuracy of the Vigileo/FloTrac system has been improved-follow-up after a software update: a blinded comparative study of 30 cardiac surgical patients. *J Cardiothorac Vasc Anesth* 2009; 23: 929–931.
52. Marqué S, Cariou A, Chiche JD, Squara P: Comparison between FloTrac-Vigileo and Bioreactance, a totally noninvasive method for cardiac output monitoring. *Crit Care* 2009; 13: R73.
53. Mayer J, Boldt J, Beschmann R, Stephan A, Suttner S: Uncalibrated arterial pressure waveform analysis for less-invasive cardiac output determination in obese patients undergoing cardiac surgery. *Br J Anaesth* 2009; 103: 185–190.
54. Biancofiore G, Critchley LA, Lee A, et al.: Evaluation of an uncalibrated arterial pulse contour cardiac output monitoring system in cirrhotic patients undergoing liver surgery. *Br J Anaesth* 2009; 102: 47–54.
55. Ostergaard, M, Nielsen J, Nygaard E: Pulse contour cardiac output: an evaluation of the FloTrac method. *Eur J Anaesthesiol* 2009; 26: 484–489.
56. Chakravarthy M, Rajeev S, Jawali V: Cardiac index value measurement by invasive, semi-invasive and non invasive techniques: a prospective study in postoperative off pump coronary artery bypass surgery patients. *J Clin Monit Comput* 2009; 23: 175–180.
57. Concha MR, Mertz VF, Cortínez LI, González KA, Butte JM: Pulse contour analysis and transesophageal echocardiography: a comparison of measurements of cardiac output during laparoscopic colon surgery. *Anesth Analg* 2009; 109: 114–148.
58. de Wilde RB, Geerts BF, Cui J, van den Berg PC, Jansen JR: Performance of three minimally invasive cardiac output monitoring systems. *Anaesthesia* 2009; 64: 762–769.
59. Eleftheriadis S, Galatoudis Z, Didilis V, et al.: Variations in arterial blood pressure are associated with parallel changes in FlowTrac/Vigileo-derived cardiac output measurements: a prospective comparison study. *Crit Care* 2009; 13: R179.
60. Schramm S, Albrecht E, Frascarolo P, Chassot PG, Spahn DR: Validity of an arterial pressure waveform analysis device: does the puncture site play a role in the agreement with intermittent pulmonary artery

- catheter thermodilution measurements? *J Cardiothorac Vasc Anesth* 2010; 24: 250–256.
61. *Slagt C, Beute J, Hoeksema M, Malagon I, Mulder JW, Groeneveld JA*: Cardiac output derived from arterial pressure waveform analysis without calibration vs. thermodilution in septic shock: evolving accuracy of software versions. *Eur J Anaesthesiol* 2010; 27: 550–554.
  62. *Böettger SF, Pavlovic D, Gründling M, et al.*: Comparison of arterial pressure cardiac output monitoring with transpulmonary thermodilution in septic patients. *Med Sci Monit* 2010; 16: PR1–7.
  63. *Jeong YB, Kim TH, Roh YJ, Choi IC, Suh JH*: Comparison of uncalibrated arterial pressure waveform analysis with continuous thermodilution cardiac output measurements in patients undergoing elective off-pump coronary artery bypass surgery. *J Cardiothorac Vasc Anesth* 2010. 24: 767–771.
  64. *Krejci V, Vannucci A, Abbas A, Chapman W, Kangrga IM*: Comparison of calibrated and uncalibrated arterial pressure-based cardiac output monitors during orthotopic liver transplantation. *Liver Transpl* 2010; 16: 773–782.
  65. *Vetrugno L, Costa MG, Spagnesi L, et al.*: Uncalibrated arterial pulse cardiac output measurements in patients with moderately abnormal left ventricular function. *J Cardiothorac Vasc Anesth* 2010; 25: 53–58.
  66. *Saraceni E, Rossi S, Persona P, et al.*: Comparison of two methods for cardiac output measurement in critically ill patients. *Br J Anaesth* 2011; 106: 690–694.
  67. *Biancofiore G, Critchley LA, Lee A, et al.*: Evaluation of a new software version of the FloTrac/Vigileo (version 3.02) and a comparison with previous data in cirrhotic patients undergoing liver transplant surgery. *Anesth Analg* 2011; 113: 515–522.
  68. *de Abreu MG, Quintel M, Ragaller M, Albrecht DM*: Partial carbon dioxide rebreathing: a reliable technique for noninvasive measurement of nonshunted pulmonary capillary blood flow. *Crit Care Med* 1997; 25: 675–683.
  69. *Kuck K, Ing D, Haryadi DG, et al.*: Evaluation of partial re-breathing cardiac output measurement during surgery. *Anesthesiology* 1998; 89: A542.
  70. *Guzzi L, Jaffe MB, Orr JA*: Clinical evaluation of a new non-invasive method of cardiac output measurement: preliminary results in CABG patients. *Anesthesiology* 1998; 89: A543.
  71. *Jopling M*: Noninvasive cardiac output determination utilizing the method of partial CO<sub>2</sub> rebreathing. A comparison with continuous and bolus thermodilution cardiac output. *Anesthesiology* 1998; 89: A554.
  72. *Watt RC, Loeb RG, Orr JA*: Comparison of a new non-invasive cardiac output technique with invasive bolus and continuous thermodilution. *Anesthesiology* 1998; 89: A536.
  73. *Loeb RG, Brown EA, DiNardo JA, et al.*: Clinical accuracy of a new non-invasive cardiac output monitor. *Anesthesiology* 1999; 91: A474.
  74. *Kuck K, Orr JA, Haryadi DG, et al.*: Evaluation of the NICO partial rebreathing cardiac output monitor. *Anesthesiology* 1999; 91: A560.
  75. *Haryadi DG, Orr JA, Kuck K, McJames S, Westenskow DR*: Partial CO<sub>2</sub> rebreathing indirect Fick technique for non-invasive measurement of cardiac output. *J Clin Monit Comput* 2000; 16: 361–374.
  76. *van Heerden PV, Baker S, Lim SI, Weidman C, Bulsara M*: Clinical evaluation of the non-invasive cardiac output (NICO) monitor in the intensive care unit. *Anaesth Intensive Care* 2000; 28: 427–430.
  77. *Jin X, Weil MH, Tang W, et al.*: End-tidal carbon dioxide as a noninvasive indicator of cardiac index during circulatory shock. *Crit Care Med* 2000; 28: 2415–2419.
  78. *Maxwell RA, Gibson JB, Slade JB, Fabian TC, Proctor KG*: Non-invasive cardiac output by partial CO<sub>2</sub> rebreathing after severe chest trauma. *J Trauma* 2001; 51: 849–853.
  79. *Nilsson LB, Eldrup N, Berthelsen PG*: Lack of agreement between thermodilution and carbon dioxide-rebreathing cardiac output. *Acta Anaesthesiol Scand* 2001; 45: 680–685.
  80. *Odenstedt H, Stenqvist O, Lundin S*: Clinical evaluation of a partial CO<sub>2</sub> rebreathing technique for cardiac output monitoring in critically ill patients. *Acta Anaesthesiol Scand* 2002; 46: 152–159.
  81. *Murias GE, Villagrà A, Vatuá S, et al.*: Evaluation of a noninvasive method for cardiac output measurement in critical care patients. *Intensive Care Med* 2002; 28: 1470–1474.
  82. *Kotake Y, Moriyama K, Innami Y, et al.*: Performance of noninvasive partial CO<sub>2</sub> rebreathing cardiac output and continuous thermodilution cardiac output in patients undergoing aortic reconstruction surgery. *Anesthesiology* 2003; 99: 283–288.
  83. *Gunkel CI, Valverde A, Morey TE, Hernandez J, Robertson SA*: Comparison of non-invasive cardiac output measurement by partial carbon dioxide rebreathing with the lithium dilution method in anesthetized dogs. *J Vet Emerg Crit Care* 2004; 14: 187–195.
  84. *Botero M, Kirby D, Lobato EB, Staples ED, Gravenstein N*: Measurement of cardiac output before and after cardiopulmonary bypass: Comparison among aortic transit-time ultrasound, thermodilution, and noninvasive partial CO<sub>2</sub> rebreathing. *J Cardiothorac Vasc Anesth* 2004; 18: 563–572.
  85. *Rocco M, Spadetta G, Morelli A, et al.*: A comparative evaluation of thermodilution and partial CO<sub>2</sub> rebreathing techniques for cardiac output assessment in critically ill patients during assisted ventilation. *Intensive Care Med* 2004; 30: 82–87.
  86. *Gueret G, Kiss G, Rossignol B, et al.*: Cardiac output measurements in off-pump coronary surgery: comparison between NICO and the Swan-Ganz catheter. *Eur J Anaesthesiol* 2006; 23: 848–854.
  87. *Kotake Y, Yamada T, Nagata H, et al.*: Improved accuracy of cardiac output estimation by the partial CO<sub>2</sub> rebreathing method. *J Clin Monit Comput* 2009; 23: 149–155.

**Corresponding author:**

*Manu LNG Malbrain, MD, PhD*  
*ICU and High Care Burns Unit Director*  
*ZNA Stuivenberg*  
*Lange Beeldekensstraat 267*  
*B-2060 Antwerp, Belgium*  
*tel.: +32 3/2177399*  
*e-mail: manu.malbrain@skynet.be*

*Received: 17.05.2012*

*Accepted: 24.09.2012*